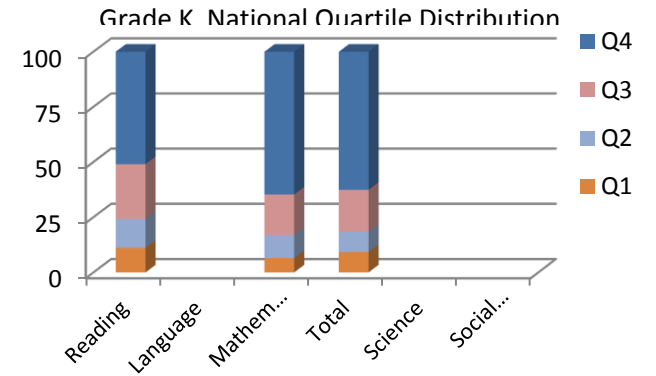


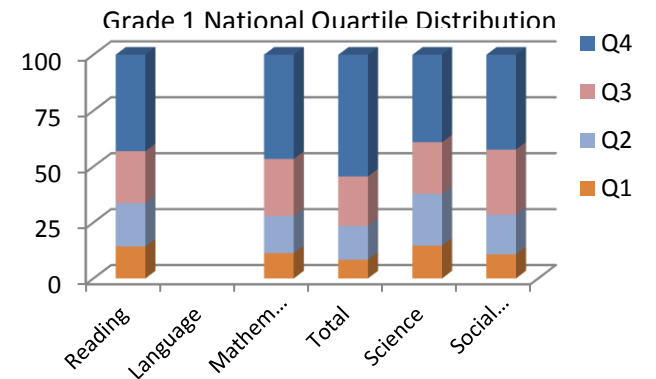
Grade K

Archdiocese of Chicago (2015)	Mean NCE	Mean Anticipated NCE	DIFF NCE	NP Mean NCE	% in National Quartile				% Students Above National
					Q1	Q2	Q3	Q4	
					Reading	65.7			
Language				n/a					n/a
Mathematics	73.1			86	6.5	10.5	18.3	64.7	83.0
Total	71			84	9.2	9.2	19	62.7	81.7
Science				n/a					n/a
Social Studies				n/a					n/a



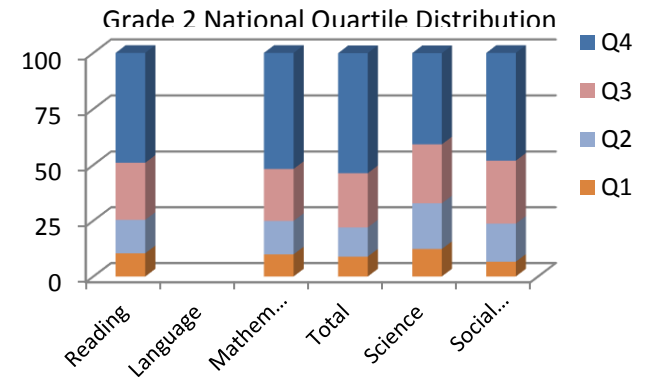
Grade 1

Archdiocese of Chicago (2015)	Mean NCE	Mean Anticipated NCE	DIFF NCE	NP Mean NCE	% in National Quartile				% Students Above National
					Q1	Q2	Q3	Q4	
					Reading	59.9			
Language				n/a					n/a
Mathematics	63.4			74	11.3	16.7	25.4	46.6	72.0
Total	66.3			78	8.4	15.1	22.1	54.4	76.5
Science	59.6			68	14.7	23.2	23	39.1	62.1
Social Studies	62.1			72	10.8	17.7	29.1	42.4	71.5



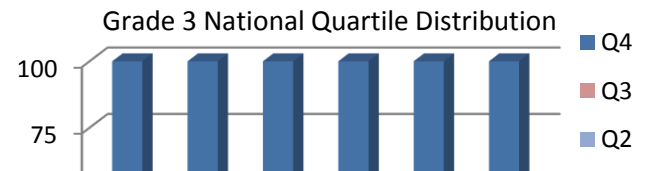
Grade 2

Archdiocese of Chicago (2015)	Mean NCE	Mean Anticipated NCE	DIFF NCE	NP Mean NCE	% in National Quartile				% Students Above National
					Q1	Q2	Q3	Q4	
					Reading	63.3	58.4	4.9	
Language				n/a					n/a
Mathematics	64.2	60.7	3.5	75	9.9	15	23.3	51.9	75.2
Total	64	59.5	4.5	75	8.9	13.1	24.3	53.6	77.9
Science	59.8	56.7	3.1	68	12.3	20.5	26.4	40.7	67.1
Social Studies	63.9	58.5	5.4	75	6.6	17.1	28.2	48.1	76.3

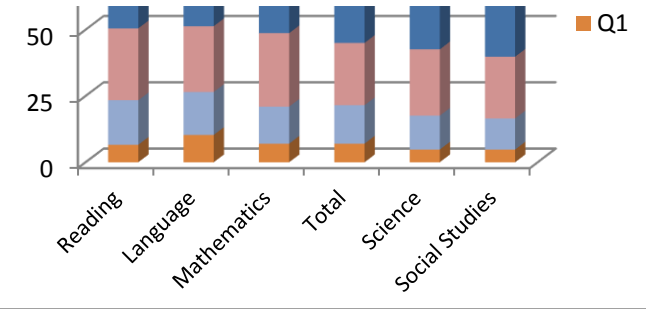


Grade 3

Archdiocese of Chicago (2015)	Mean NCE	Mean Anticipated NCE	DIFF NCE	NP Mean NCE	% in National Quartile	% Students Above National

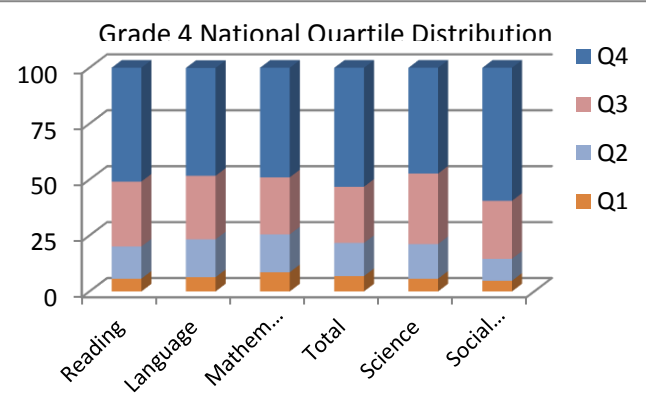


Archdiocese of Chicago (2015)	NCE	NCE	NCE	NCE	Q1	Q2	Q3	Q4	National Mean
Reading	63.6	63	0.6	74	6.6	16.8	27.1	49.5	76.6
Language	63.4	62.1	1.3	74	10.3	16.2	24.8	48.7	73.5
Mathematics	64.9	62.5	2.4	76	7	14	27.7	51.3	79.0
Total	65.7	63.6	2.1	77	7	14.5	23.5	55	78.5
Science	66.6	61.2	5.4	78	4.8	12.8	25	57.5	82.5
Social Studies	66.9	62.4	4.5	79	4.8	11.7	23.3	60.2	83.5



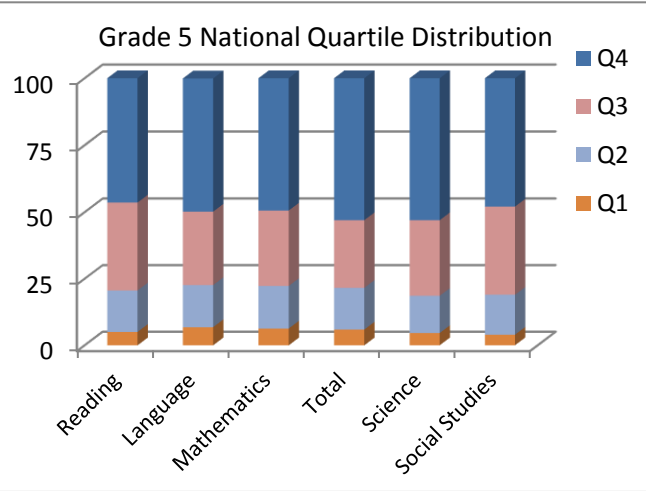
Grade 4

Archdiocese of Chicago (2015)	Mean NCE	Mean Anticipated NCE	DIFF NCE	NP Mean NCE	% in National Quartile				% Students Above National
					Q1	Q2	Q3	Q4	
Reading	64.6	61.8	2.8	76	5.7	14.4	29	51	80.0
Language	63.2	61.7	1.5	73	6.4	16.9	28.4	48.2	76.6
Mathematics	63.3	61.5	1.8	74	8.6	16.9	25.5	49	74.5
Total	64.9	62.5	2.4	76	6.9	14.8	25.1	53.2	78.3
Science	62.9	61.5	1.4	73	5.7	15.5	31.5	47.3	78.8
Social Studies	67.2	62.2	5	79	4.8	9.8	25.9	59.5	85.4



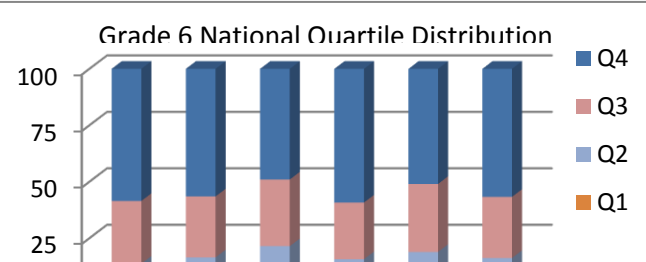
Grade 5

Archdiocese of Chicago (2015)	Mean NCE	Mean Anticipated NCE	DIFF NCE	NP Mean NCE	% in National Quartile				% Students Above National Mean
					Q1	Q2	Q3	Q4	
Reading	63	62.6	0.4	73	5	15.6	33	46.5	79.5
Language	64.2	62.3	1.9	75	6.8	15.8	27.6	49.7	77.3
Mathematics	63.7	62.3	1.4	74	6.3	16	28.3	49.4	77.7
Total	65.4	63.7	1.7	77	5.9	15.7	25.4	53	78.4
Science	64.9	61.6	3.3	76	4.6	14	28.4	53	81.4
Social Studies	63.1	62	1.1	73	4	15	33.1	47.9	81.0

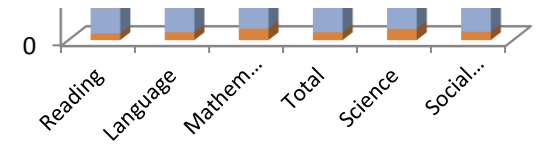


Grade 6

Archdiocese of Chicago (2015)	Mean NCE	Mean Anticipated NCE	DIFF NCE	NP Mean NCE	% in National Quartile				% Students Above National
					Q1	Q2	Q3	Q4	
Reading	67.7	64.2	3.5	80	2.9	10.8	27.8	58.5	86.3
Language	67.3	64.1	3.2	79	3.4	13.1	27	56.6	83.6



<i>Mathematics</i>	64.6	63.5	1.1	76	5	16.5	29.5	49	78.5
Total	68.6	65.6	3	81	3.4	12.3	25.1	59.2	84.3
<i>Science</i>	64.6	62.7	1.9	76	4.9	14	30.1	51	81.1
<i>Social Studies</i>	67	63.4	3.6	79	3.6	12.6	27.1	56.7	83.8



Grade 7

	Mean NCE	Mean Anticipated NCE	DIFF NCE	NP Mean NCE	% in National Quartile				% Students Above National Mean
					Q1	Q2	Q3	Q4	
Archdiocese of Chicago (2015)									
<i>Reading</i>	65.6	67.1	-1.5	77	1.7	11.2	33.5	53.6	87.1
<i>Language</i>	70.2	66	4.2	83	1.5	8.8	27.1	62.6	89.7
<i>Mathematics</i>	67.3	65.6	1.7	79	3.1	13.4	27.3	56.1	83.4
Total	70.3	68.1	2.2	83	2.4	10.1	24.1	63.4	87.5
<i>Science</i>	62.5	65.6	-3.1	72	4.8	14.7	35.9	44.6	80.5
<i>Social Studies</i>	67.3	65.6	1.7	79	2.1	10.5	30.8	56.6	87.4

