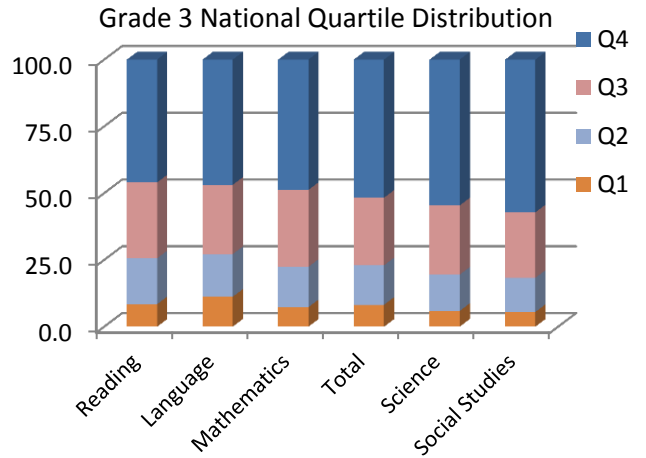


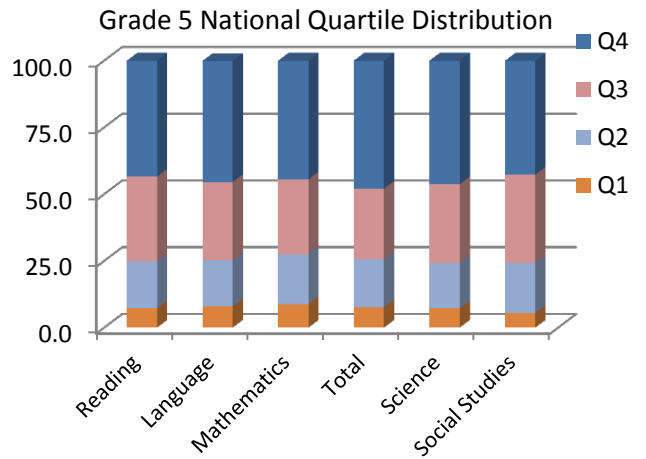
Grade 3

Arch of Chicago (2013)	Mean NCE	Mean Anticipated NCE	DIFF NCE	NP Mean NCE	% in National Quartile				% Students Above National Mean
					Q1	Q2	Q3	Q4	
Reading	62	61.6	0.4	72	8.4	17.2	28.4	46.0	74.4
Language	62.3	60.8	1.5	72	11.2	16.0	25.9	46.9	72.8
Mathematics	63.7	61.3	2.4	74	7.3	15.1	28.8	48.8	77.6
Total	64.3	62.2	2.1	75	8.2	14.8	25.3	51.8	77.1
Science	65.2	60.2	5.0	76	5.9	13.6	25.9	54.6	80.5
Social Studies	65.8	61.2	4.6	77	5.5	12.8	24.5	57.2	81.7



Grade 5

Arch of Chicago (2013)	Mean NCE	Mean Anticipated NCE	DIFF NCE	NP Mean NCE	% in National Quartile				% Students Above National Mean
					Q1	Q2	Q3	Q4	
Reading	61.6	60.5	1.1	71	7.3	17.7	31.6	43.4	75.0
Language	62.5	60.4	2.1	72	7.9	17.3	29.4	45.3	74.7
Mathematics	61.4	60.1	1.3	71	8.9	18.7	27.9	44.5	72.4
Total	63.4	61.4	2.0	74	7.7	17.9	26.5	47.9	74.4
Science	62.2	59.8	2.4	72	7.2	17.0	29.5	46.4	75.9
Social Studies	61	60.2	0.8	70	5.5	18.8	33.0	42.7	75.7



Grade 7

Arch of Chicago (2013)	Mean NCE	Mean Anticipated NCE	DIFF NCE	NP Mean NCE	% in National Quartile				% Students Above National Mean
					Q1	Q2	Q3	Q4	
Reading	64.9	66.1	-1.2	76	2.4	12.0	34.3	51.2	85.5
Language	68.9	65	3.9	82	2.1	10.5	28.0	59.4	87.4
Mathematics	65.9	64.6	1.3	77	4.1	13.8	29.5	52.6	82.1
Total	69	67	2.0	82	2.9	12.0	24.4	60.7	85.1
Science	61.3	64.8	-3.5	70	4.6	17.2	37.2	41.0	78.2
Social Studies	66.2	64.7	1.5	78	2.7	10.9	32.2	54.3	86.5

