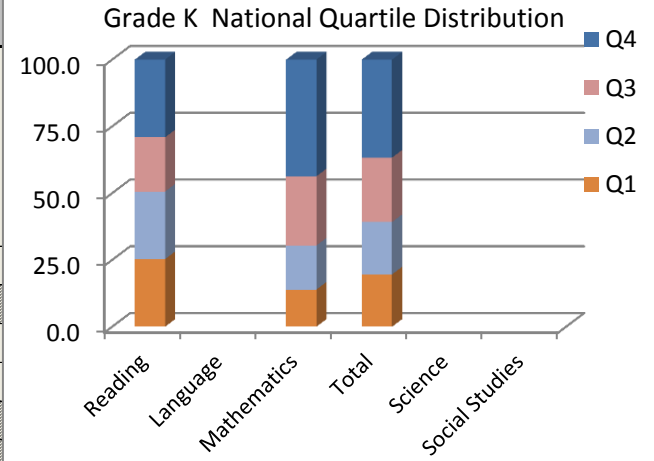


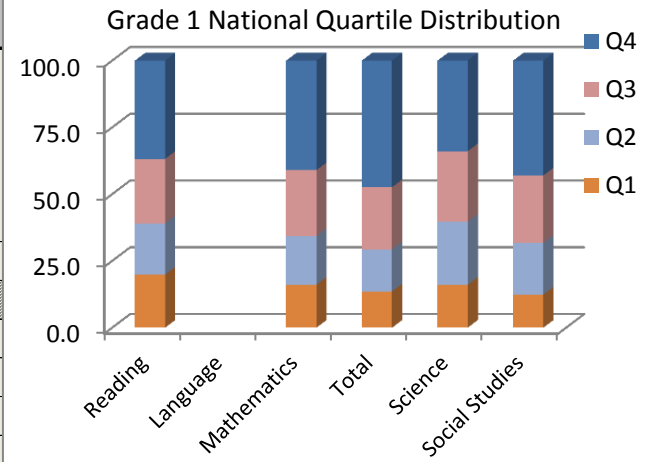
Grade K

Arch of Chicago (2013)	Mean NCE	Mean Anticipated NCE	DIFF NCE	NP Mean NCE	% in National Quartile				% Students Above National Mean
					Q1	Q2	Q3	Q4	
Reading	51			52	25.3	25.3	20.3	29.1	49.4
Language	n/a								n/a
Mathematics	61.4			71	13.9	16.5	25.9	43.7	69.6
Total	56.9			63	19.6	19.6	24.1	36.7	60.8
Science	n/a								n/a
Social Studies	n/a								n/a



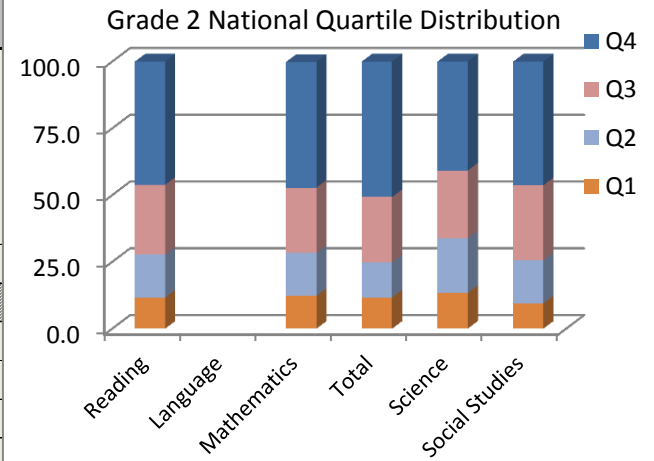
Grade 1

Arch of Chicago (2013)	Mean NCE	Mean Anticipated NCE	DIFF NCE	NP Mean NCE	% in National Quartile				% Students Above National Mean
					Q1	Q2	Q3	Q4	
Reading	56			61	19.9	19.2	24.1	36.8	60.9
Language	n/a								n/a
Mathematics	59.3			67	16.1	18.3	24.6	41.0	65.6
Total	62.3			72	13.6	15.8	23.2	47.4	70.6
Science	57.2			63	16.1	23.6	26.4	33.9	60.3
Social Studies	61.4			71	12.4	19.4	25.2	43.0	68.2



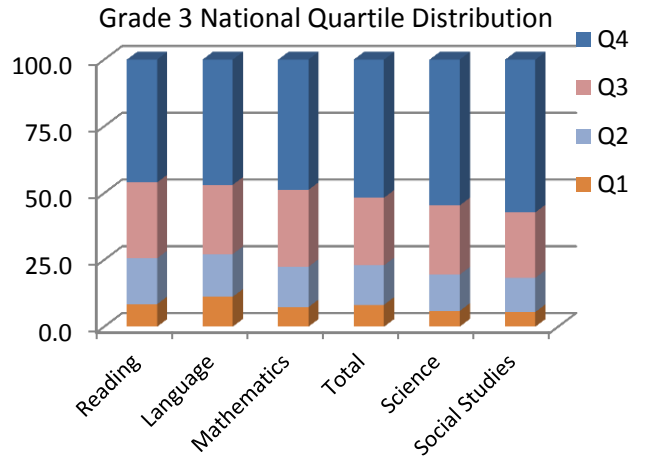
Grade 2

Arch of Chicago (2013)	Mean NCE	Mean Anticipated NCE	DIFF NCE	NP Mean NCE	% in National Quartile				% Students Above National Mean
					Q1	Q2	Q3	Q4	
Reading	61.5	57.8	3.7	71	11.6	16.1	26.2	46.2	72.4
Language	n/a								n/a
Mathematics	61.7	59.6	2.1	71	12.3	16.1	24.4	47.1	71.5
Total	61.7	58.6	3.1	71	11.7	13.1	24.5	50.7	75.2
Science	59.1	56.3	2.8	67	13.4	20.4	25.4	40.8	66.2
Social Studies	62	58.1	3.9	72	9.5	16.1	28.1	46.3	74.4



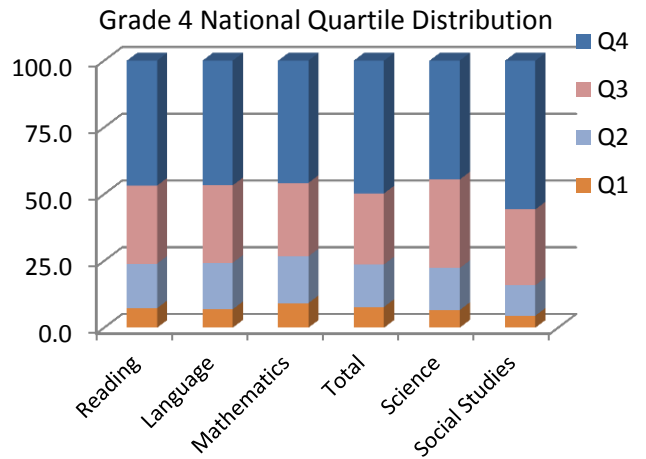
Grade 3

<i>Arch of Chicago (2013)</i>	Mean NCE	Mean Anticipated NCE	DIFF NCE	NP Mean NCE	% in National Quartile				% Students Above National Mean
					Q1	Q2	Q3	Q4	
<i>Reading</i>	62	61.6	0.4	72	8.4	17.2	28.4	46.0	74.4
<i>Language</i>	62.3	60.8	1.5	72	11.2	16.0	25.9	46.9	72.8
<i>Mathematics</i>	63.7	61.3	2.4	74	7.3	15.1	28.8	48.8	77.6
Total	64.3	62.2	2.1	75	8.2	14.8	25.3	51.8	77.1
<i>Science</i>	65.2	60.2	5.0	76	5.9	13.6	25.9	54.6	80.5
<i>Social Studies</i>	65.8	61.2	4.6	77	5.5	12.8	24.5	57.2	81.7



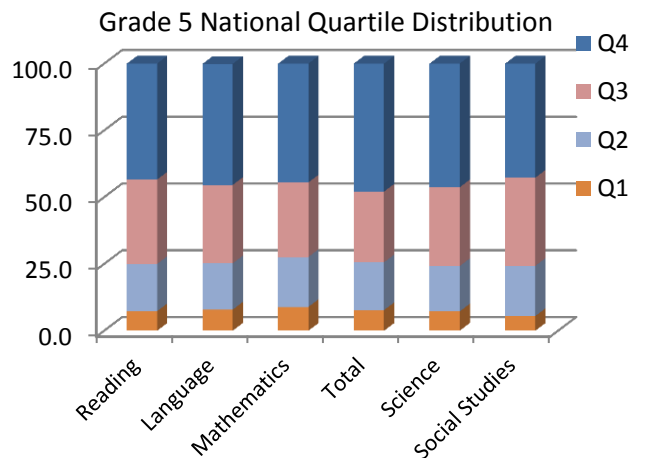
Grade 4

<i>Arch of Chicago (2013)</i>	Mean NCE	Mean Anticipated NCE	DIFF NCE	NP Mean NCE	% in National Quartile				% Students Above National Mean
					Q1	Q2	Q3	Q4	
<i>Reading</i>	62.7	60.7	2.0	73	7.3	16.7	29.2	46.8	76.0
<i>Language</i>	62.6	60.7	1.9	73	6.9	17.4	29.0	46.7	75.7
<i>Mathematics</i>	61.8	60.3	1.5	71	9.2	17.5	27.5	45.8	73.3
Total	63.4	61.2	2.2	74	7.8	15.9	26.6	49.7	76.3
<i>Science</i>	62.1	60.6	1.5	72	6.6	15.7	33.2	44.5	77.7
<i>Social Studies</i>	66.1	61.1	5.0	78	4.5	11.4	28.4	55.7	84.1



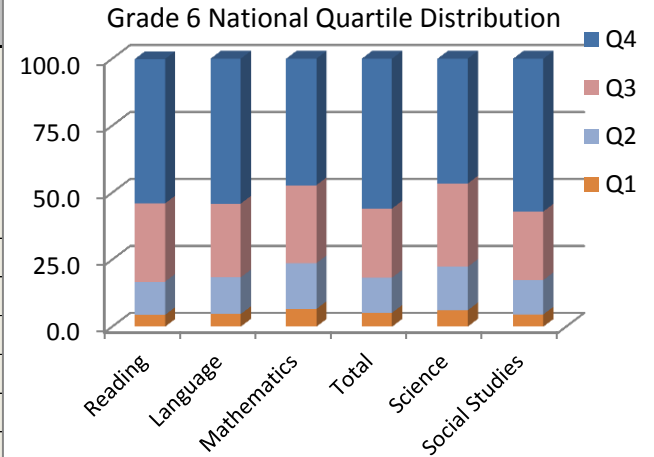
Grade 5

<i>Arch of Chicago (2013)</i>	Mean NCE	Mean Anticipated NCE	DIFF NCE	NP Mean NCE	% in National Quartile				% Students Above National Mean
					Q1	Q2	Q3	Q4	
<i>Reading</i>	61.6	60.5	1.1	71	7.3	17.7	31.6	43.4	75.0
<i>Language</i>	62.5	60.4	2.1	72	7.9	17.3	29.4	45.3	74.7
<i>Mathematics</i>	61.4	60.1	1.3	71	8.9	18.7	27.9	44.5	72.4
Total	63.4	61.4	2.0	74	7.7	17.9	26.5	47.9	74.4
<i>Science</i>	62.2	59.8	2.4	72	7.2	17.0	29.5	46.4	75.9
<i>Social Studies</i>	61	60.2	0.8	70	5.5	18.8	33.0	42.7	75.7



Grade 6

Arch of Chicago (2013)	Mean NCE	Mean Anticipated NCE	DIFF NCE	NP Mean NCE	% in National Quartile				% Students Above National Mean
					Q1	Q2	Q3	Q4	
<i>Reading</i>	66.1	62.9	3.2	78	4.4	12.4	29.2	53.9	83.1
<i>Language</i>	65.9	62.8	3.1	77	4.7	13.7	27.5	54.1	81.6
<i>Mathematics</i>	63.1	62.2	0.9	73	6.6	17.1	29.1	47.2	76.3
Total	66.9	64.2	2.7	79	5.2	13.1	25.8	55.9	81.7
<i>Science</i>	62.7	61.6	1.1	73	6.1	16.2	31.1	46.7	77.8
<i>Social Studies</i>	66.9	62.2	4.7	79	4.6	12.8	25.6	57.0	82.6



Grade 7

Arch of Chicago (2013)	Mean NCE	Mean Anticipated NCE	DIFF NCE	NP Mean NCE	% in National Quartile				% Students Above National Mean
					Q1	Q2	Q3	Q4	
<i>Reading</i>	64.9	66.1	-1.2	76	2.4	12.0	34.3	51.2	85.5
<i>Language</i>	68.9	65	3.9	82	2.1	10.5	28.0	59.4	87.4
<i>Mathematics</i>	65.9	64.6	1.3	77	4.1	13.8	29.5	52.6	82.1
Total	69	67	2.0	82	2.9	12.0	24.4	60.7	85.1
<i>Science</i>	61.3	64.8	-3.5	70	4.6	17.2	37.2	41.0	78.2
<i>Social Studies</i>	66.2	64.7	1.5	78	2.7	10.9	32.2	54.3	86.5

