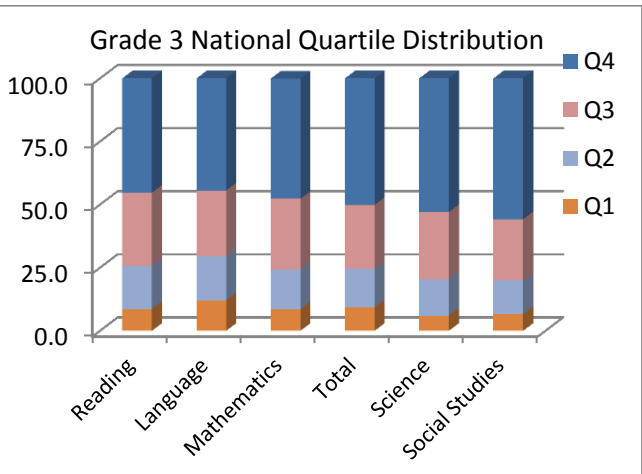
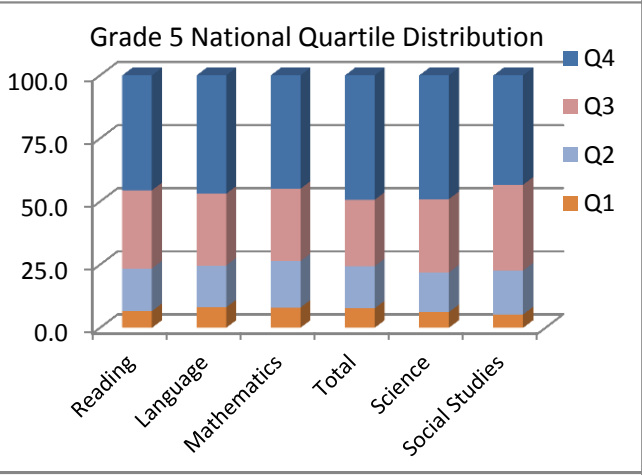


Grade 3									
Arch of Chicago (2014)	Mean NCE	Mean Anticipated NCE	DIFF NCE	NP Mean NCE	% in National Quartile				% Students Above National Mean
					Q1	Q2	Q3	Q4	
Reading	61.6	61.2	0.4	71	8.7	17.0	29.0	45.3	74.3
Language	61.3	60.5	0.8	70	12.1	17.3	26.2	44.4	70.6
Mathematics	62.7	60.8	1.9	73	8.6	15.7	28.0	47.6	75.6
Total	63.4	61.8	1.6	74	9.3	15.2	25.4	50.1	75.5
Science	64.7	59.9	4.8	76	6.0	14.4	26.7	52.9	79.6
Social Studies	64.9	60.9	4	76	6.6	13.3	24.3	55.9	80.2



Grade 5									
Arch of Chicago (2014)	Mean NCE	Mean Anticipated NCE	DIFF NCE	NP Mean NCE	% in National Quartile				% Students Above National Mean
					Q1	Q2	Q3	Q4	
Reading	62	61.1	0.9	72	6.6	16.9	31.0	45.5	76.5
Language	62.8	60.9	1.9	73	8.1	16.6	28.4	46.9	75.3
Mathematics	61.7	60.8	0.9	71	8.0	18.4	28.7	45.0	73.7
Total	63.7	62.1	1.6	74	7.7	16.7	26.3	49.3	75.6
Science	63.1	60.3	2.8	73	6.2	15.7	29.1	49.0	78.1
Social Studies	61.3	60.7	0.6	70	5.3	17.4	34.0	43.3	77.3



Grade 7									
Arch of Chicago (2014)	Mean NCE	Mean Anticipated NCE	DIFF NCE	NP Mean NCE	% in National Quartile				% Students Above National Mean
					Q1	Q2	Q3	Q4	
Reading	65.2	65.7	-0.5	76	2.5	12.2	32.9	52.5	85.4
Language	69	64.8	4	82	2.2	10.0	27.7	60.1	87.8
Mathematics	66.1	64.5	1.6	78	4.2	14.1	28.9	52.8	81.7
Total	69.1	66.7	2.4	82	3.1	11.3	24.0	61.6	85.6
Science	61.5	64.5	-3	71	5.4	15.5	37.0	42.1	79.1
Social Studies	65.7	64.4	1.3	77	3.0	12.4	30.9	53.7	84.6

